

This floor plan is an accurate copy of a portion of the Building and designated as Unit No. PH2, 352 State Street, Albany, New York, which fully and fairly depicts the layout, Unit designation and approximate dimensions of this particular Unit as built, the location of which is set forth on plans approved by the City of Albany and filed with the County of Albany.

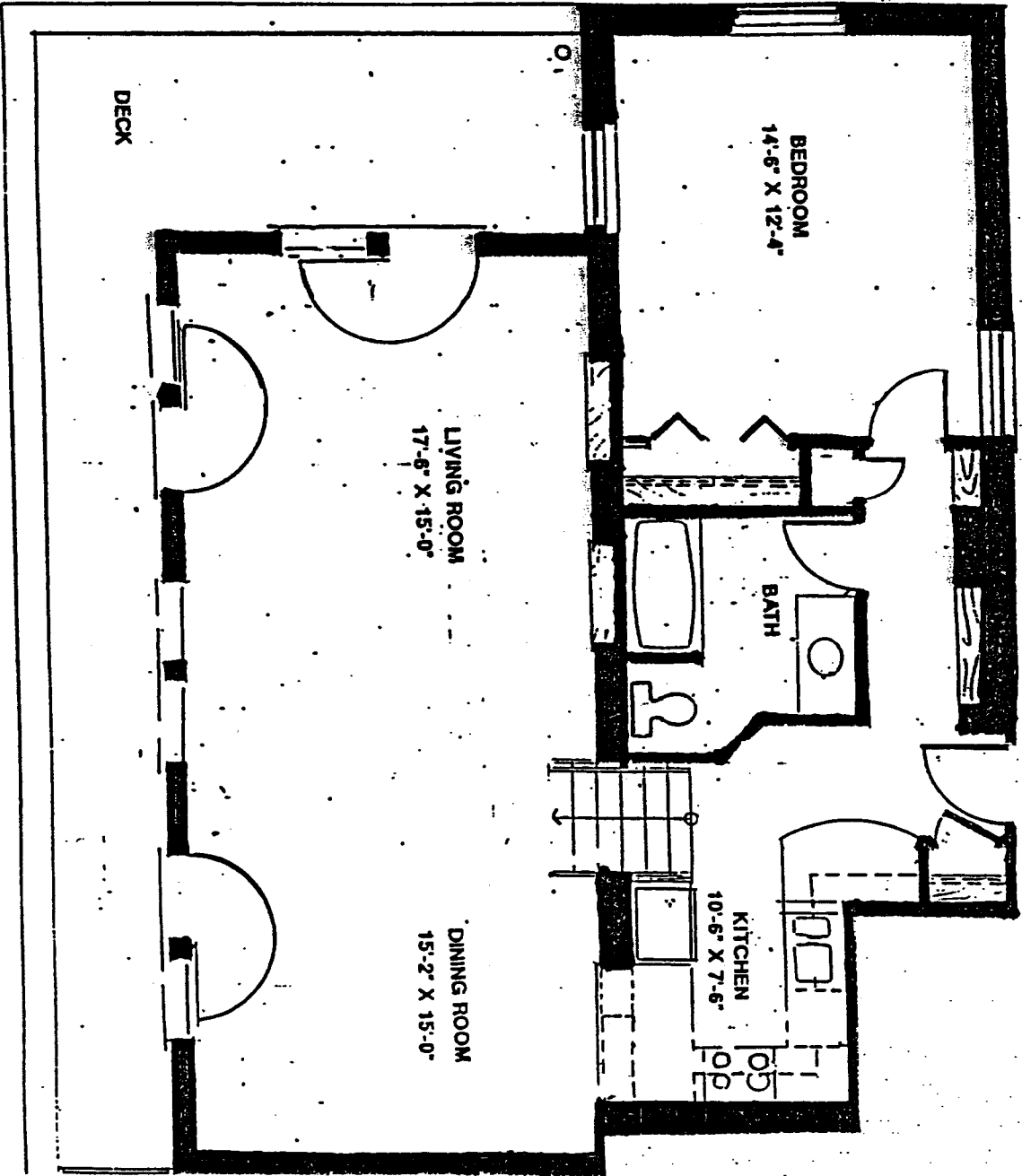
Unit No. PH2, 352 State Street
 Michael J. Roth, Registered Architect
 day of _____ 1989.
 and signed before me this _____ day of _____ 1989.

OLIVIA THURSTON

Notary Public, State of New York
 Qualified in Albany County #01-932-3608
 My Commission Expires March 30, 1990

Tax Account Number 06249-PH2

3/15/1990



UNIT PH 2
 All Dimensions Are Approximate